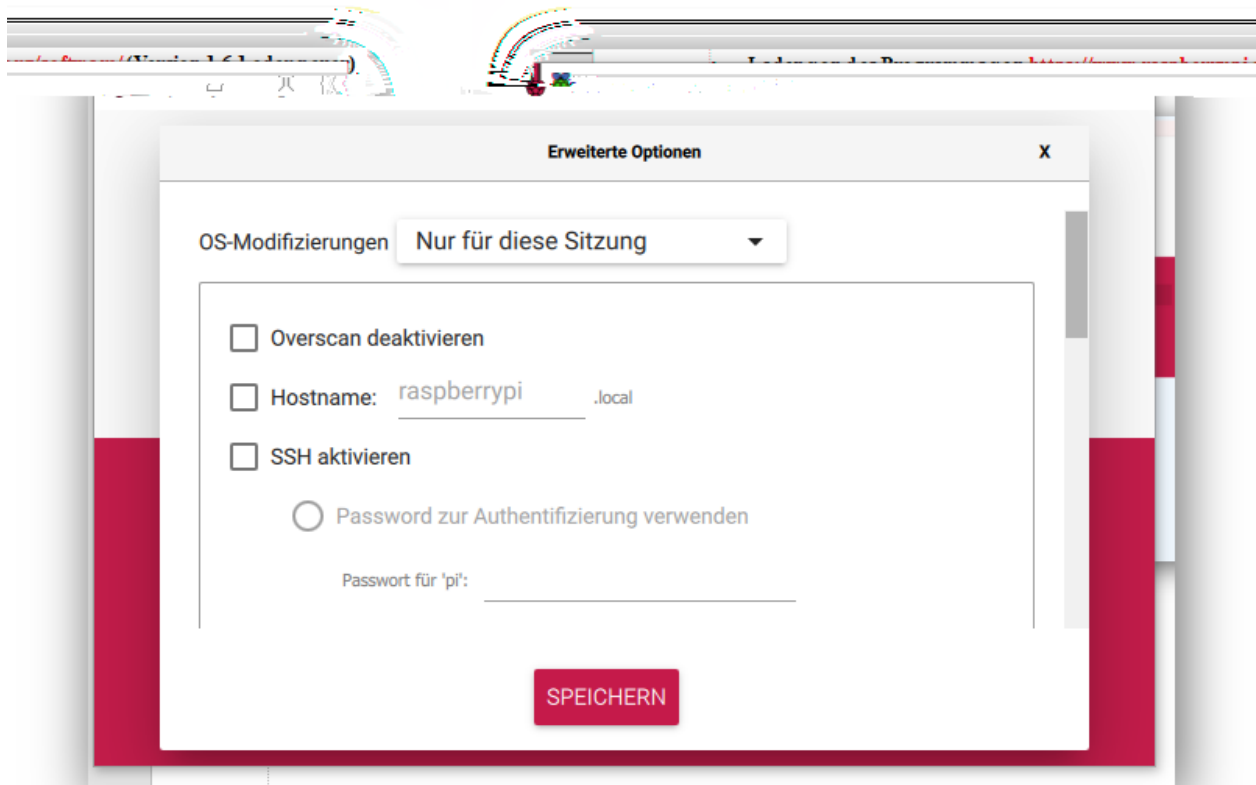
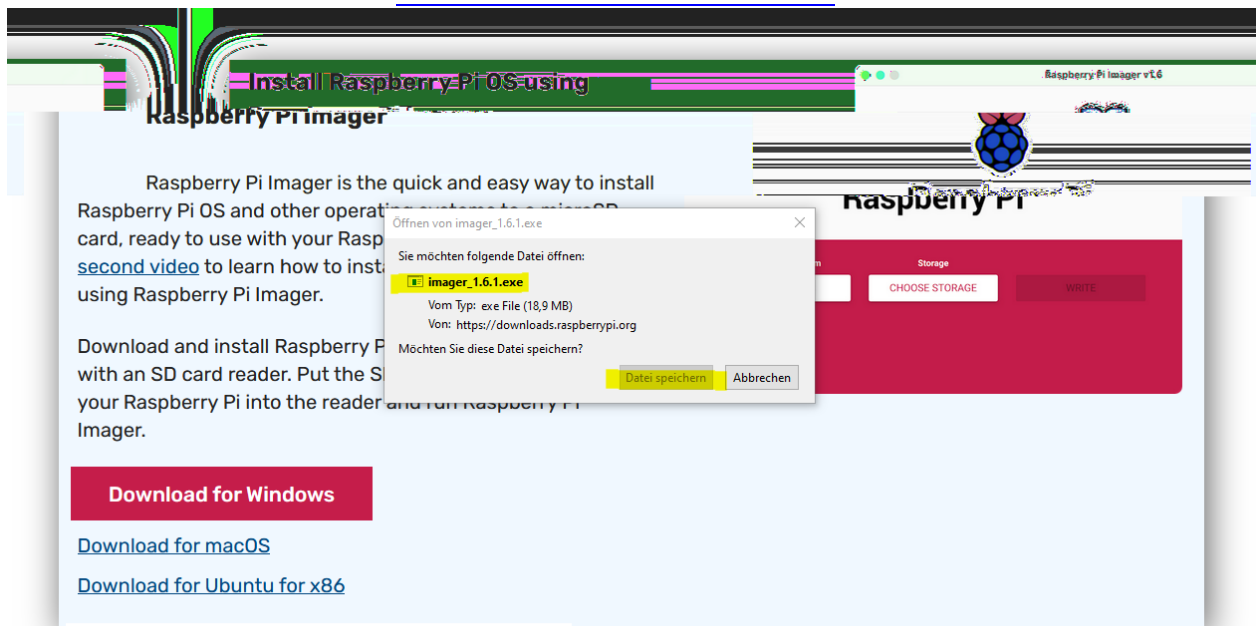
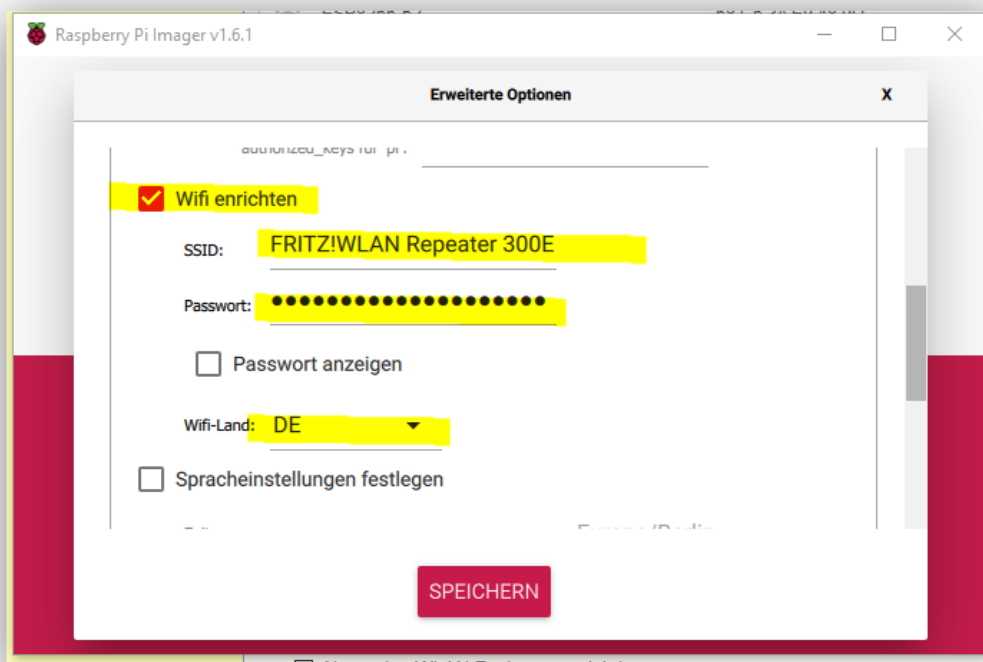
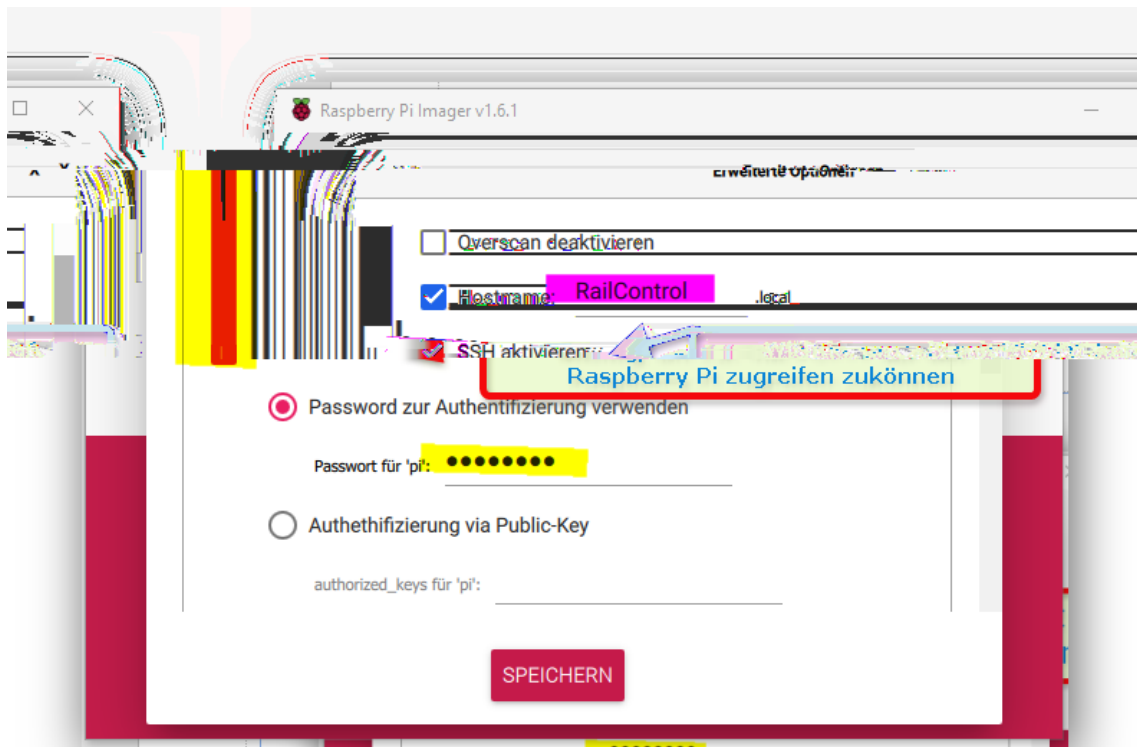
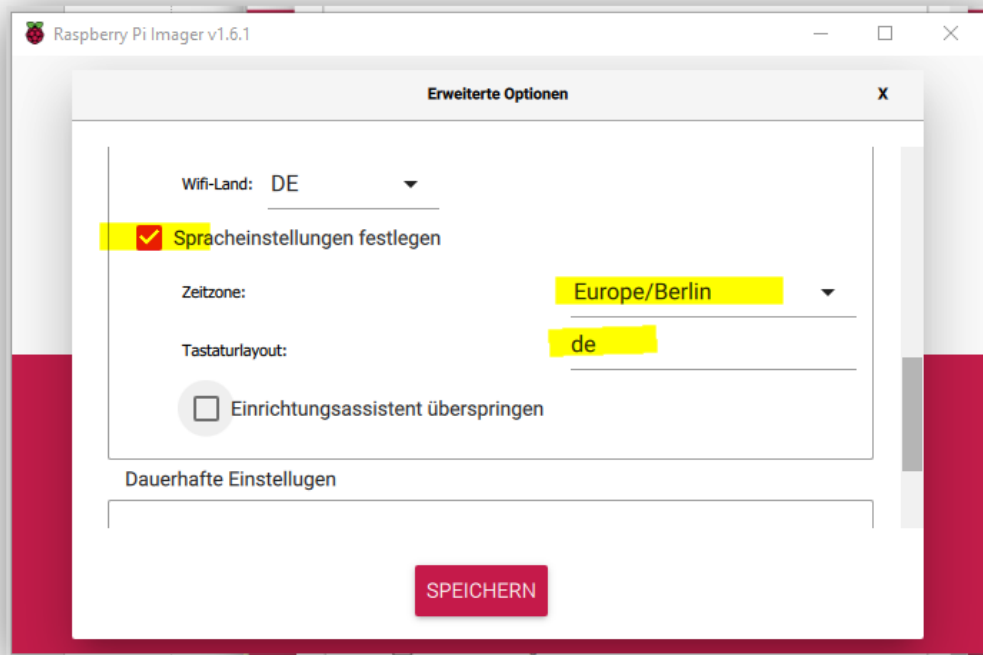


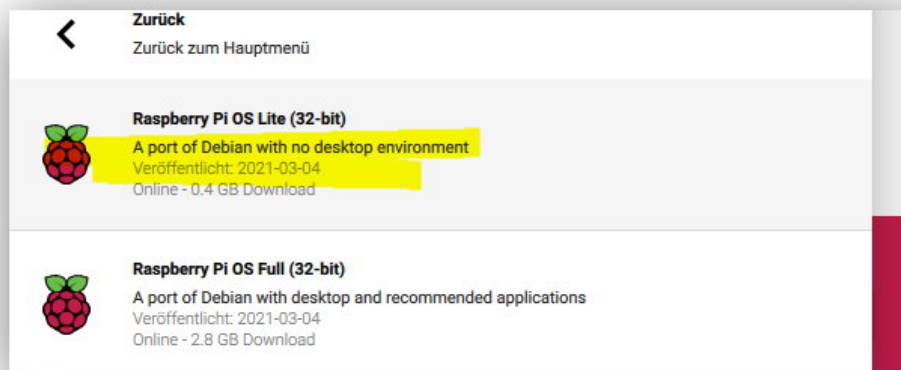
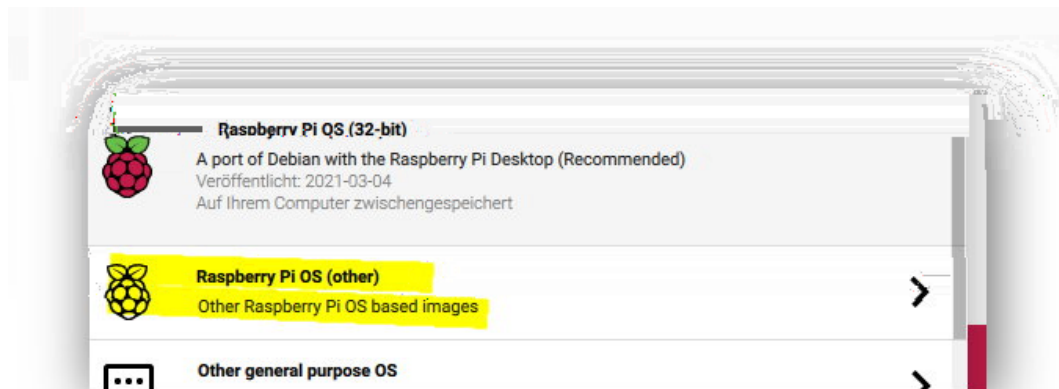
- Raspberry Pi installieren ohne eigenem Bildschirm, Tastatur und Maus.
- Bedienung nach der Installation über Putty.
- Datensicherung z.B. mit WinSCP

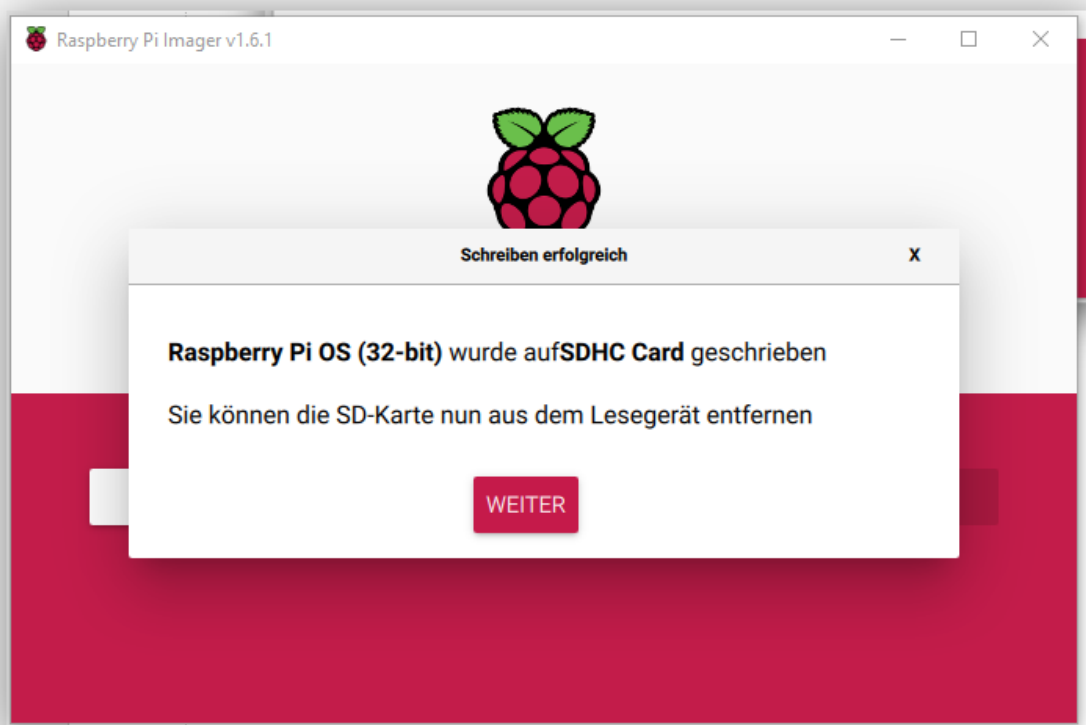




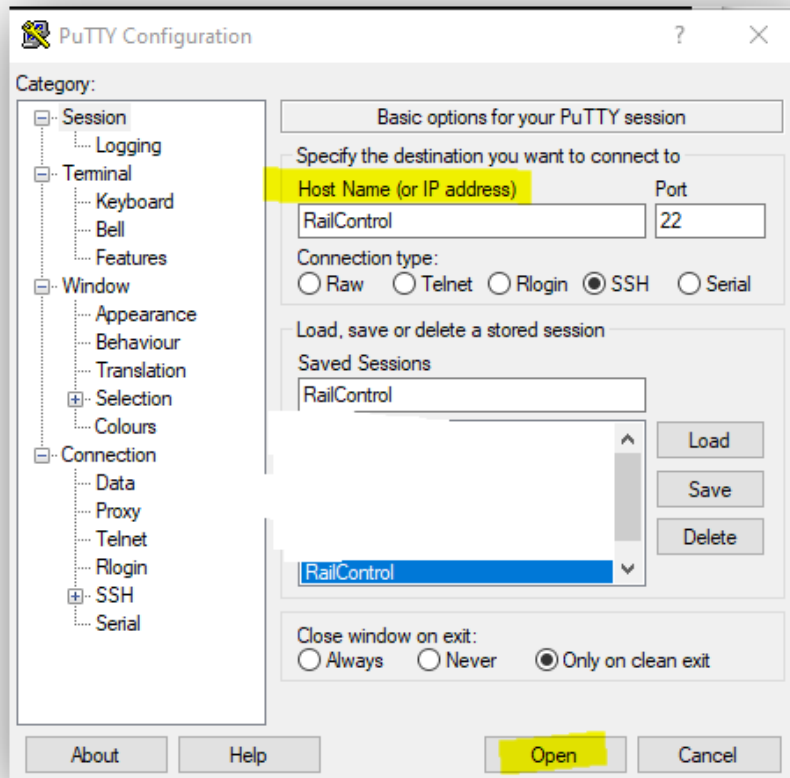


-
-
-

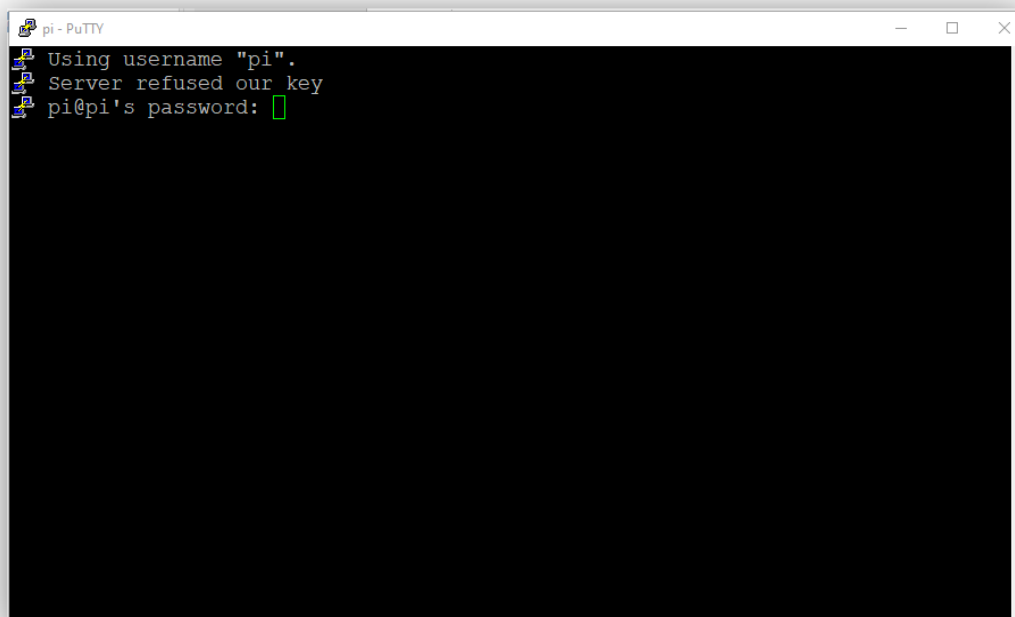




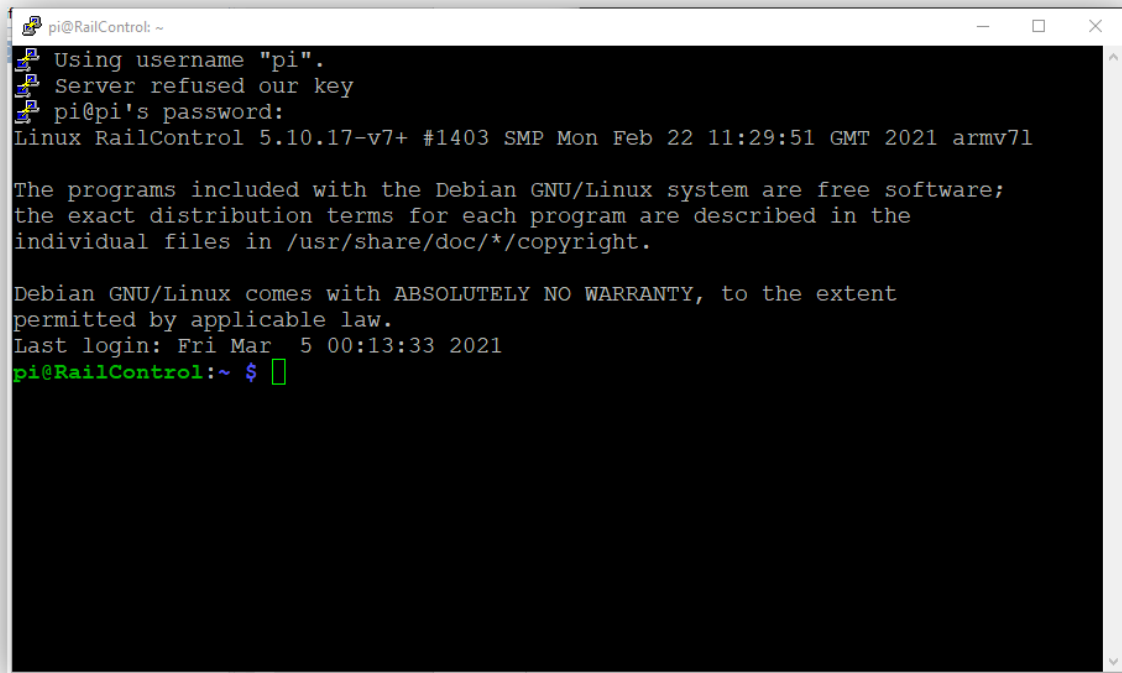
-
-
-



-
-



-

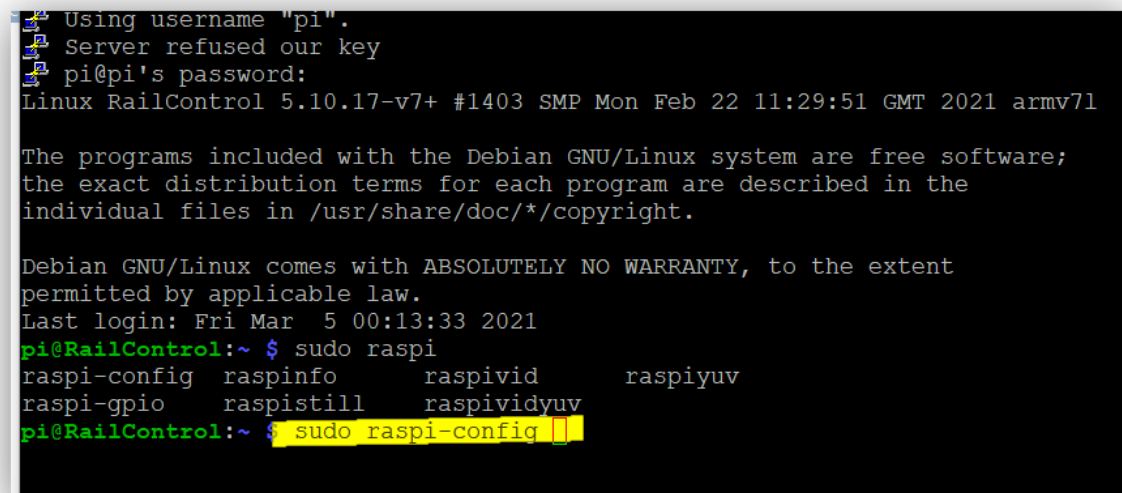


```
pi@RailControl: ~
Using username "pi".
Server refused our key
pi@pi's password:
Linux RailControl 5.10.17-v7+ #1403 SMP Mon Feb 22 11:29:51 GMT 2021 armv7l

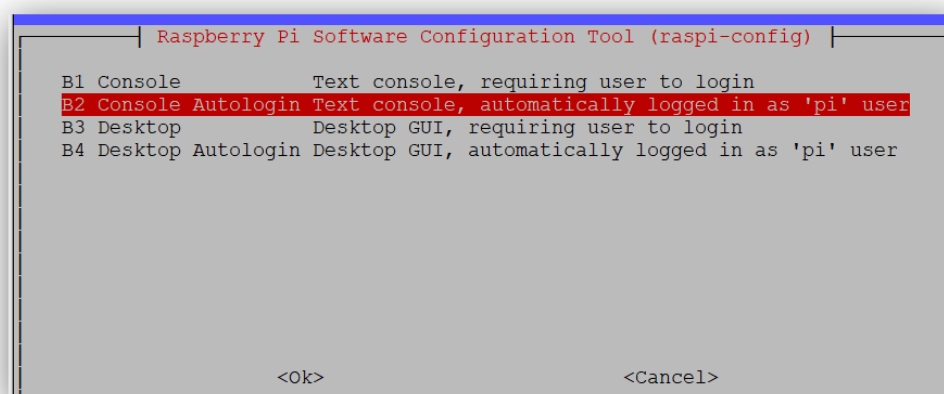
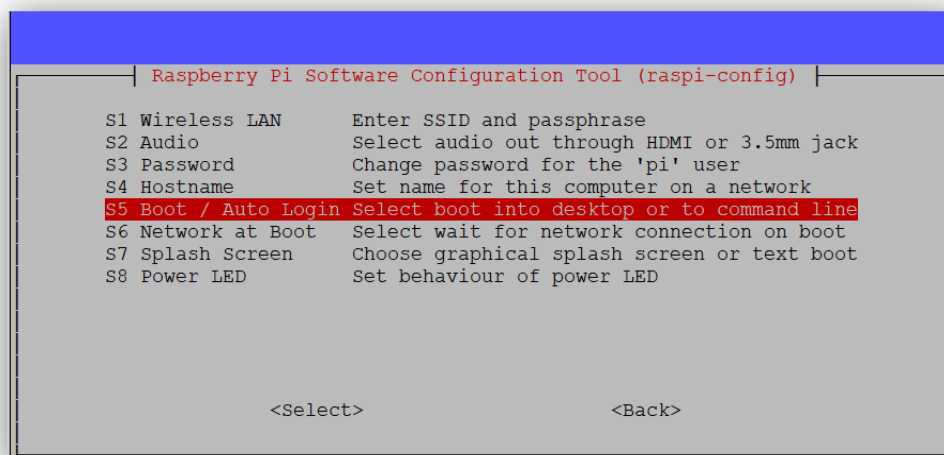
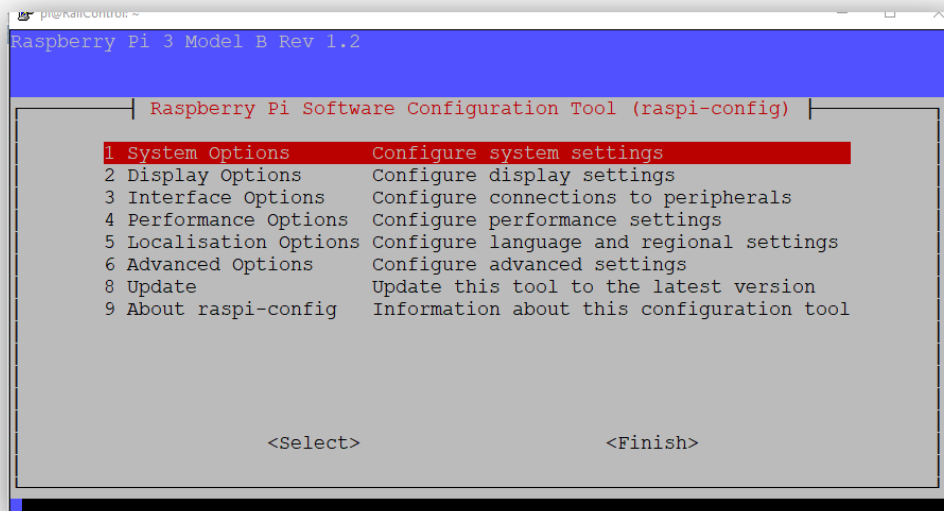
The programs included with the Debian GNU/Linux system are free software;
the exact distribution terms for each program are described in the
individual files in /usr/share/doc/*/copyright.

Debian GNU/Linux comes with ABSOLUTELY NO WARRANTY, to the extent
permitted by applicable law.
Last login: Fri Mar  5 00:13:33 2021
pi@RailControl:~ $
```

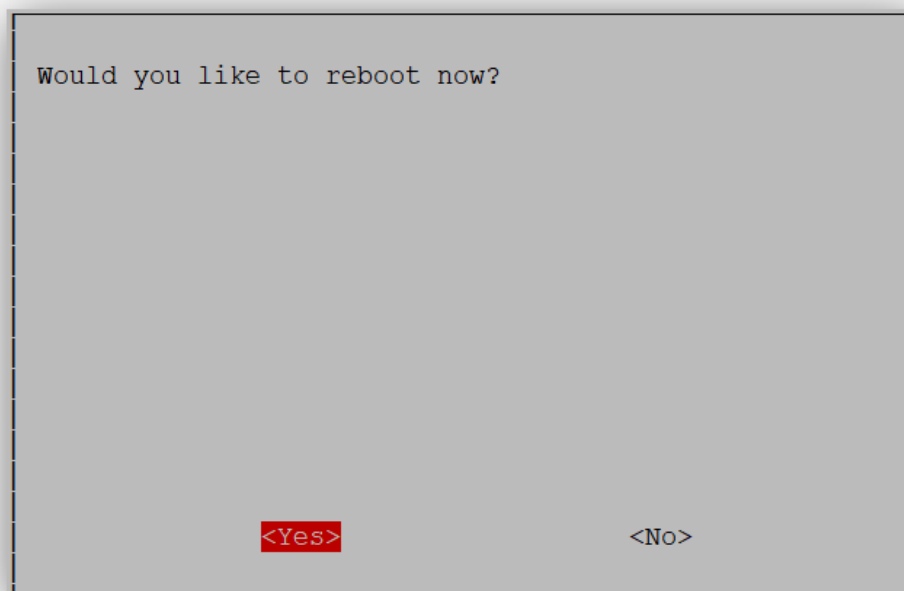
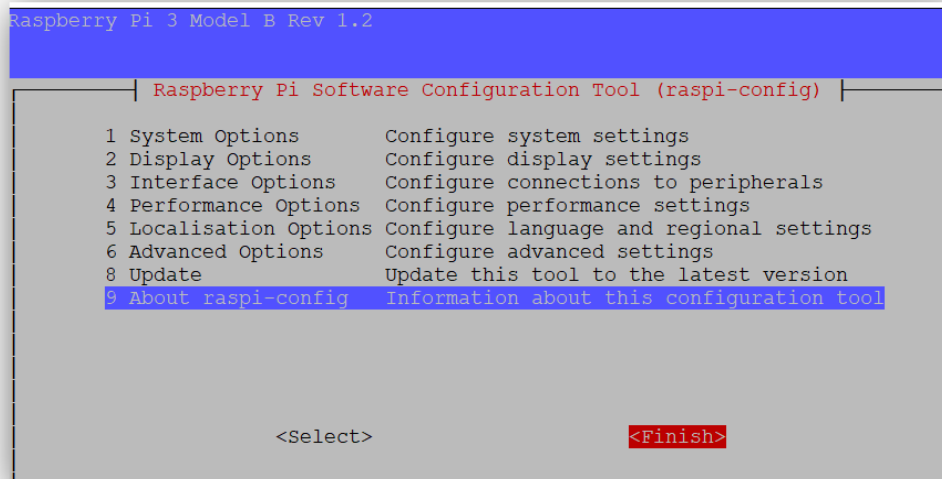
•
•



```
pi@RailControl:~ $ sudo raspi
raspi-config  raspi-info    raspivid      raspiyuv
raspi-gpio    raspistill   raspividuyuv
pi@RailControl:~ $ sudo raspi-config
```



•
•



-

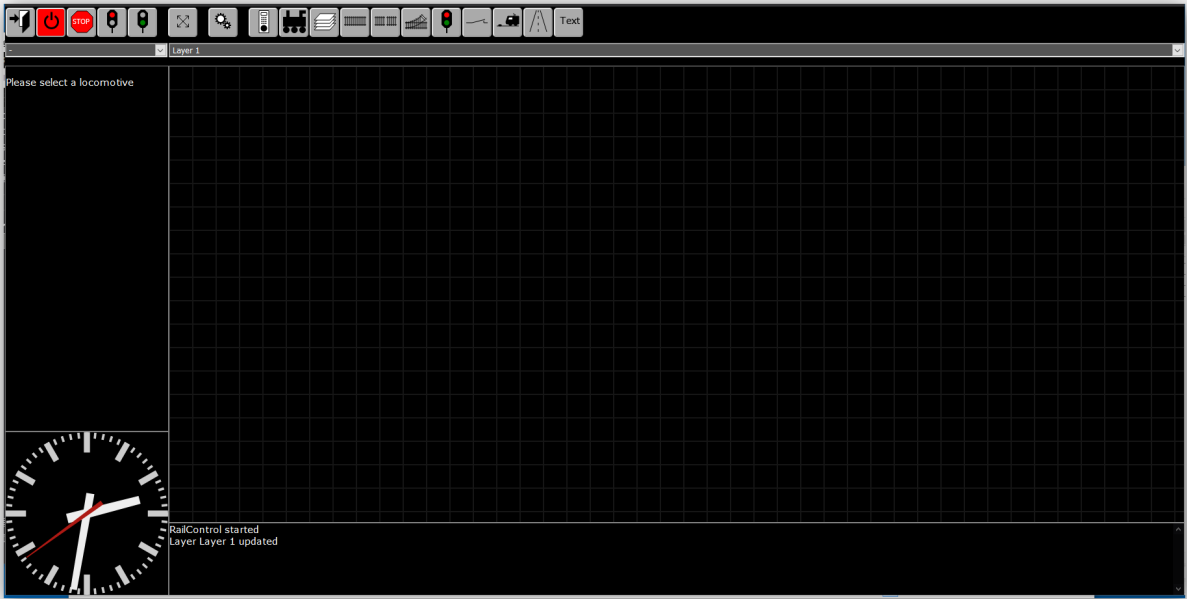
```
pi@RailControl:~ $ sudo apt-get up  
update upgrade  
pi@RailControl:~ $ sudo apt-get update
```

```
Reading package lists... Done  
pi@RailControl:~ $ sudo apt-get upgrade
```

```
xserver-common xserver-xorg-core  
107 upgraded, 0 newly installed, 0 to remove and 0 not upgraded.  
Need to get 339 MB of archives.  
After this operation, 10.2 MB of additional disk space will be used.  
Do you want to continue? [Y/n]
```

am heutigen Tage waren es z.B 107 Stück. Bis diese installiert sind dauert es etwas, aber dann ist das Betriebssystem auf dem neuesten Stand. Dieses mache ich auch nur selten, ob es sein muss kann ich nicht beurteilen, ich bin kein Linux - Mensch.

-
-
-
-
-
-
-
-
-
-



Ergebnis

-



Settings

Language: German

Default switching duration (ms): 250

Automatically add unknown feedbacks: ☐

Turn off current on feedback in free track: ☒

Select route by: Do not care

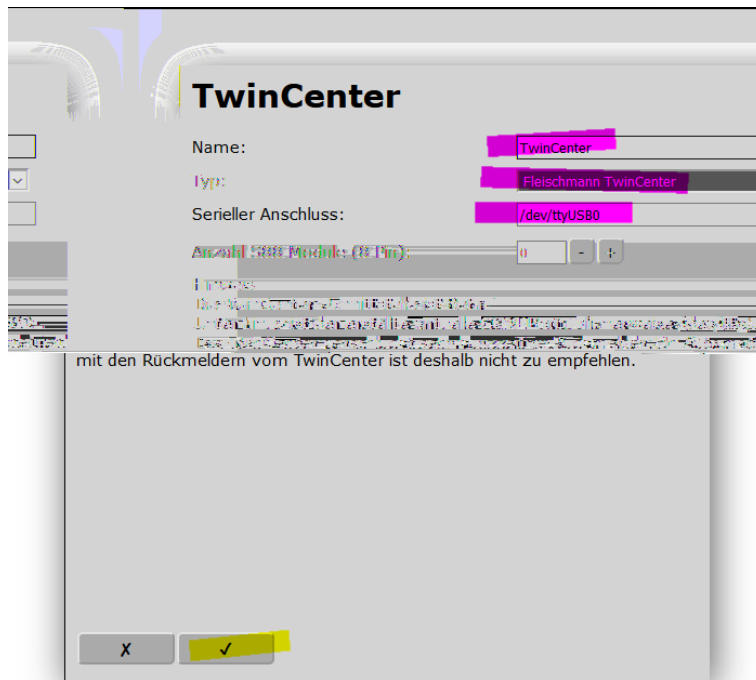
of Tracks to reserve: 2

Log level: info

X ✓

-

-



•



Taste betätigen, TwinCenter beobachten.
Rote Led wechselt auf Grün

-
-
-
-

