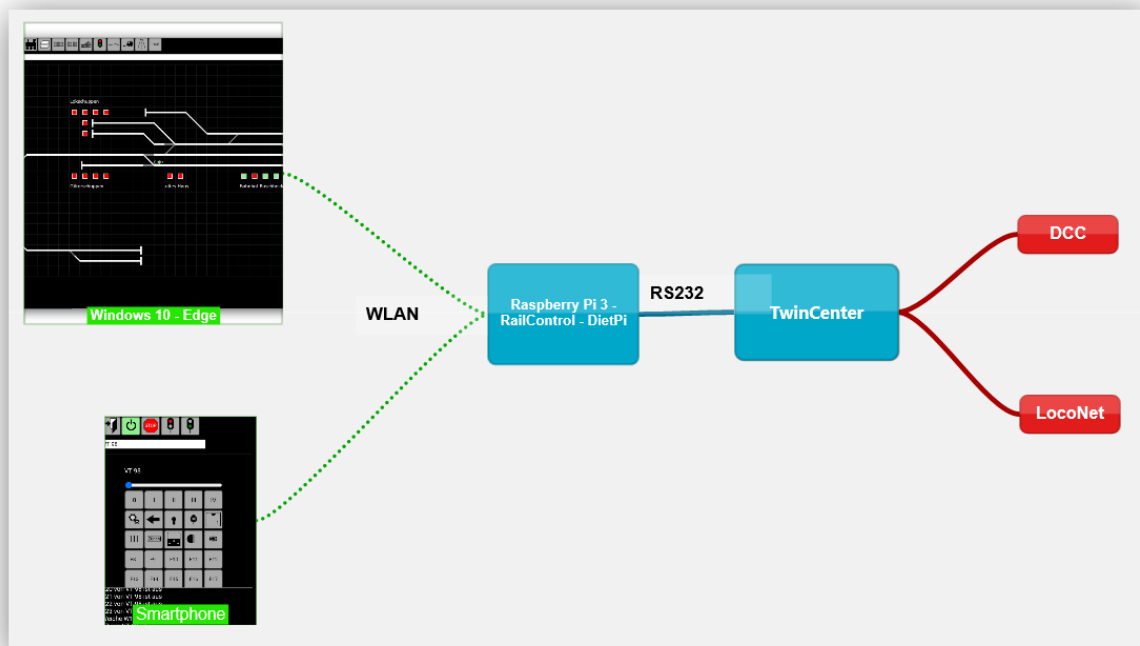


Ziel

-
-
-
-
-
-
-



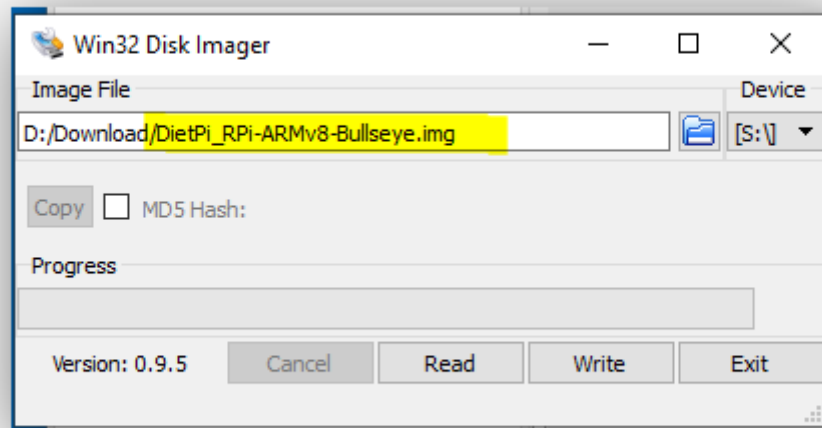
DietPi laden

-



SD - Karte schreiben

-



-

-

-
-
-

●

-
-
-

```

# Adapted from DietPi
adapter: 1=enable | 0=disable
WiFi are enabled, WiFi will take priority and Ethernet will be disabled.
edit dietpi-wifi.txt to pre-enter credentials.
DISABLED=0
ENABLED=1

# Enable Ethernet or WiFi
# - If both Ethernet and WiFi are enabled, Ethernet will take priority
# - If using WiFi, please enter your SSID and password below
AUTO_SETUP_NET_ETHERNET_ENABLE=0
AUTO_SETUP_NET_WIFI_ENABLE=1

# This is mainly aimed at RPi4 which may have an HW issue that cause
OP_NET_ETH_FORCE_SPEED=0

country code: 2 uppercase character value (e.g. GB US DE JP): https://en.wikipedia.org/wiki/List_of_ISO_3166_country_codes
AUTO_SETUP_NET_WIFI_COUNTRY_CODE=DE

```

- -

```
# Hostname
```

```
AUTO_SETUP_NET_HOSTNAME=TwinPi
```

-
-
-

```
# Entry 0
```

```
# - WiFi SSID: required, case sensitive
```

```
aWiFi_SSID[0]='F'
```

```
# - WiFi key: If no key/open, leave this blank
```

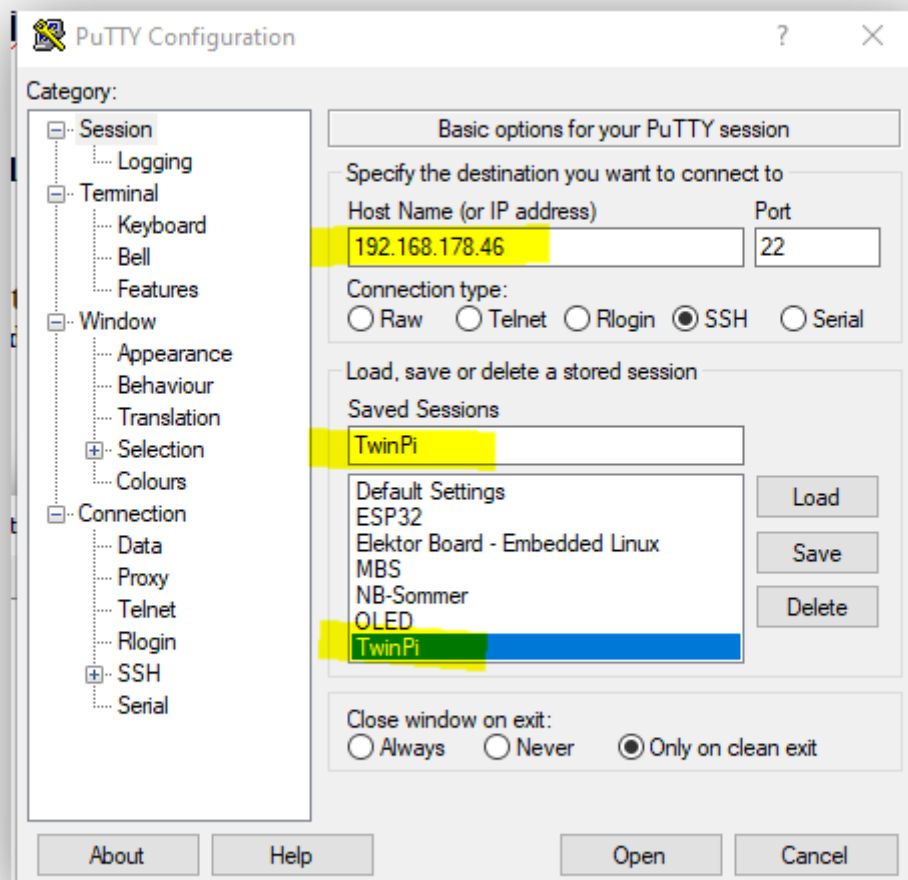
```
aWiFi_KEY[0]='2'
```

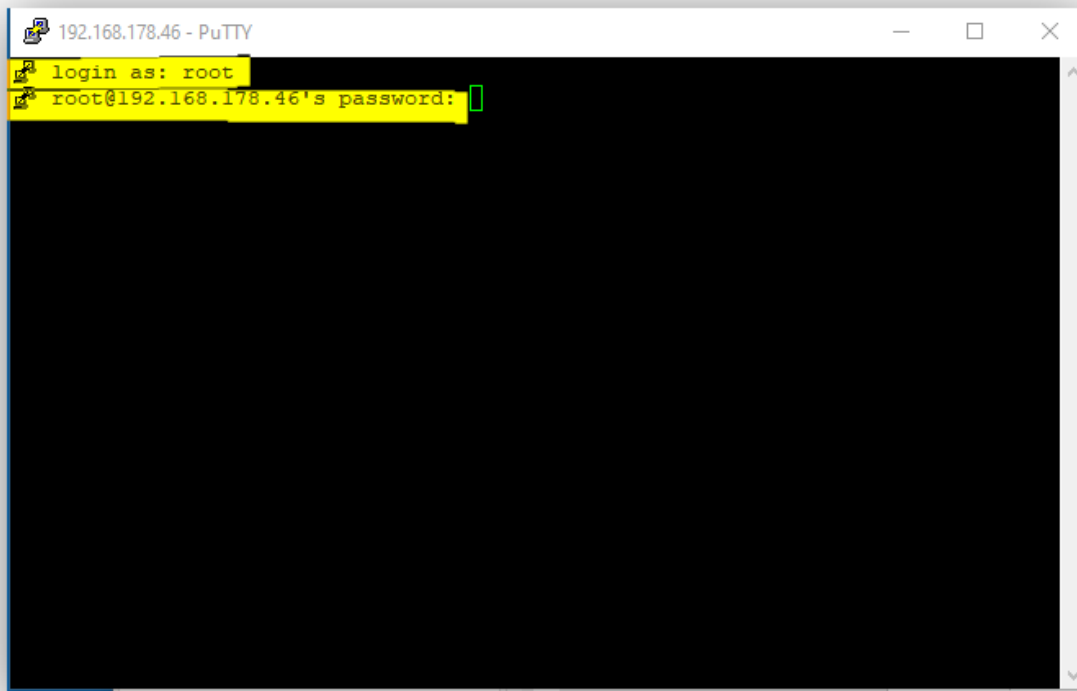
```
aWiFi_KEYMGR[0]='WPA-PSK'
```

```
# - WPA-EAP options: Only fill if WPA-EAP is set above
```

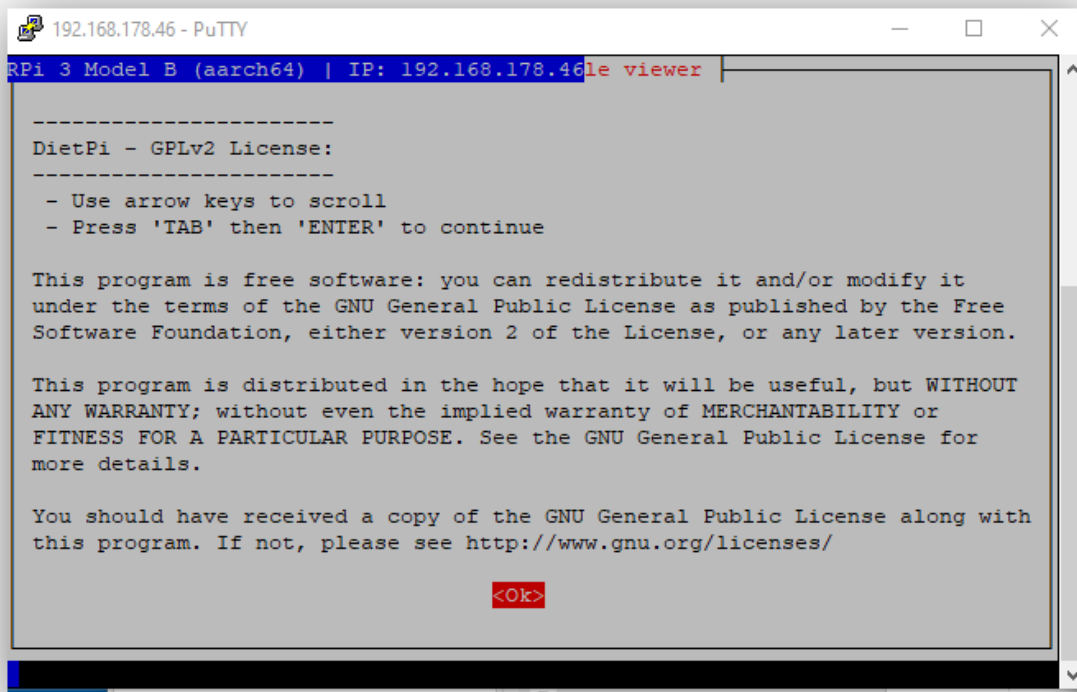
erster Start von „dietpi“

-
-
-
-
-





-
-




```
192.168.178.46 - PuTTY
d=100 MiB
[ SUB1 ] DietPi-Services > stop
[ INFO ] DietPi-Services | skip : cron (due to mask)

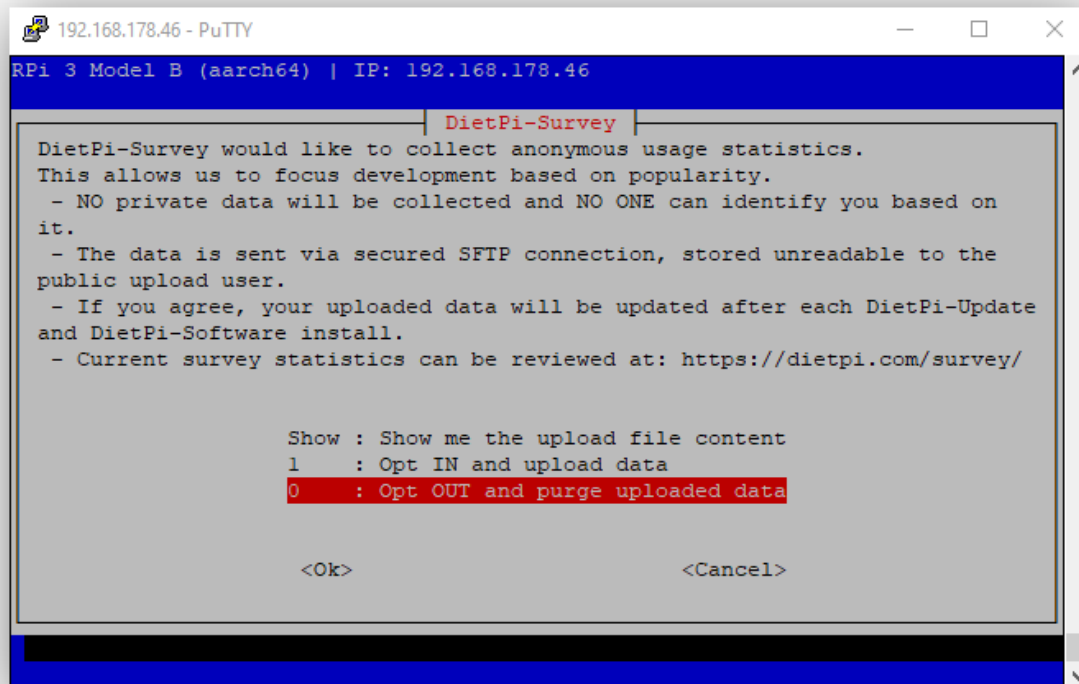
DietPi-Update
Phase: Applying pre-patches

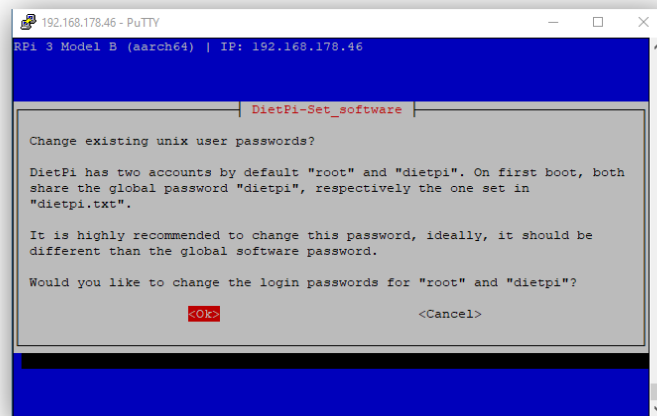
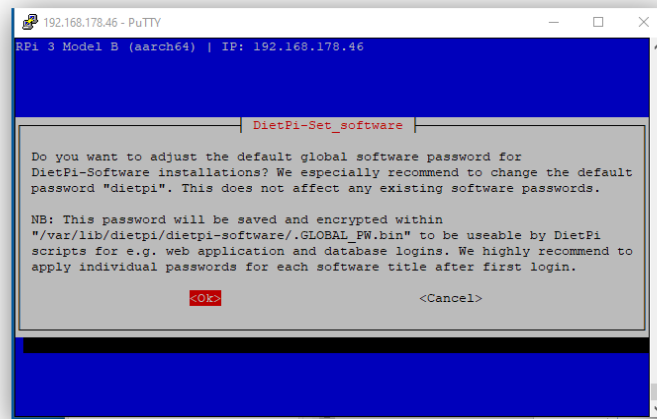
[ OK ] DietPi-Update | Downloading pre-patches
[ OK ] DietPi-Update | Applying execute permission
[ OK ] DietPi-Update | Successfully applied pre-patches

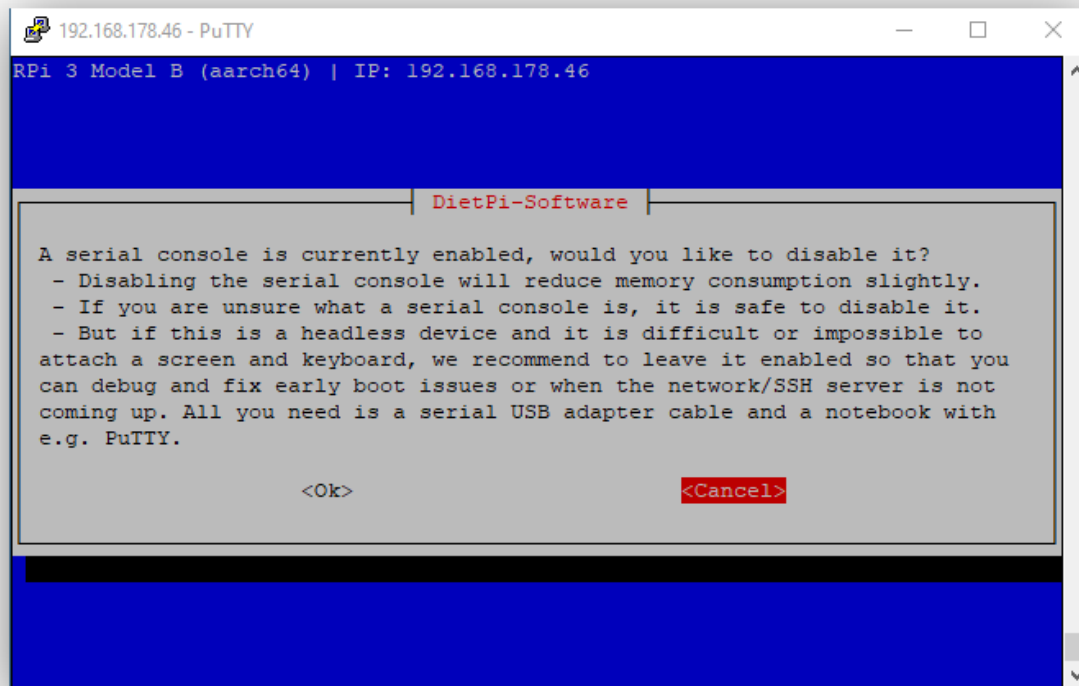
DietPi-Update
Phase: Upgrading APT packages

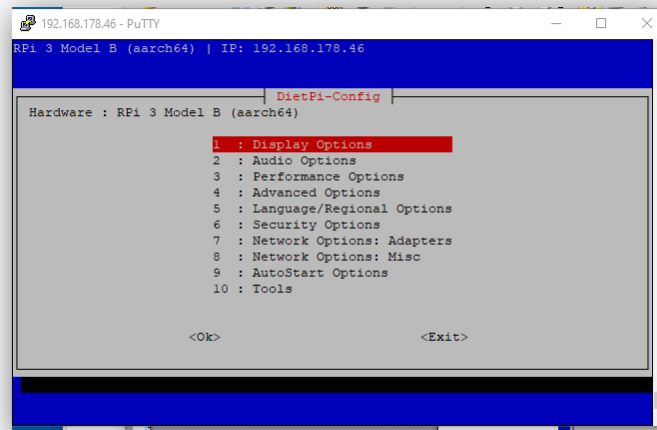
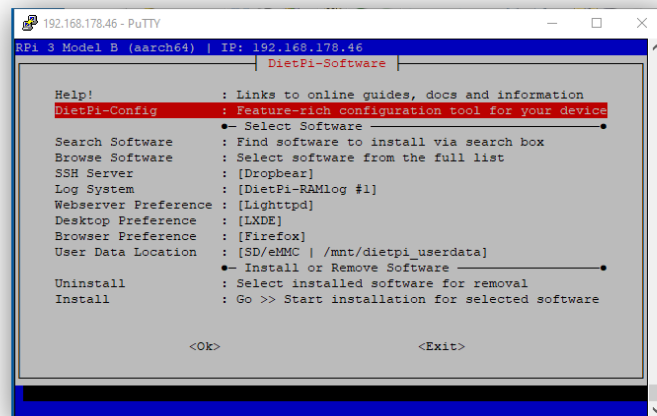
[ INFO ] DietPi-Update | APT update, please wait...
Get:1 https://deb.debian.org/debian bullseye InRelease [116 kB]
Get:2 https://deb.debian.org/debian bullseye-updates InRelease [39.4 kB]
Get:3 https://deb.debian.org/debian-security bullseye-security InRelease [44.1 kB]
Get:4 https://deb.debian.org/debian bullseye-backports InRelease [44.2 kB]
Get:5 https://archive.raspberrypi.org/debian bullseye InRelease [23.5 kB]
█
```

Verschiedene Einstellungen vornehmen









```
192.168.178.46 - PuTTY
RPI 3 Model B (aarch64) | IP: 192.168.178.46
DietPi-Software

Help!                : Links to online guides, docs and information
DietPi-Config         : Feature-rich configuration tool for your device
                      •- Select Software -----•
Search Software       : Find software to install via search box
Browse Software       : Select software from the full list
SSH Server            : [Dropbear]
Log System            : [DietPi-RAMlog #1]
Webserver Preference : [Lighttpd]
Desktop Preference    : [LXDE]
Browser Preference    : [None]
User Data Location    : [SD/eMMC | /mnt/dietpi_userdata]
                      •- Install or Remove Software -----•
Uninstall             : Select installed software for removal
Install               : Go >> Start installation for selected software

<Ok>                  <Exit>
```

```
192.168.178.46 - PuTTY
RPI 3 Model B (aarch64) | IP: 192.168.178.46
DietPi-Software

Help!                : Links to online guides, docs and information
DietPi-Config         : Feature-rich configuration tool for your device
                      •- Select Software -----•
Search Software       : Find software to install via search box
Browse Software       : Select software from the full list
SSH Server            : [Dropbear]
Log System            : [DietPi-RAMlog #1]
Webserver Preference : [Lighttpd]
Desktop Preference    : [LXDE]
Browser Preference    : [None]
User Data Location    : [SD/eMMC | /mnt/dietpi_userdata]
                      •- Install or Remove Software -----•
Uninstall             : Select installed software for removal
Install               : Go >> Start installation for selected software

<Ok>                  <Exit>
```

```
192.168.178.46 - PuTTY

DietPi v8.0.2 : 12:59 - Thu 02/03/22

- Device model : RPi 3 Model B (aarch64)
- CPU temp : 50 °C / 122 °F : Running warm, but safe
- LAN IP : 192.168.178.46 (wlan0)
- MOTD : Please help testing the new DietPi Beta v8.1:
        https://github.com/MichaIng/DietPi/issues/5218

DietPi Team      : MichaIng (lead), Daniel Knight (founder), Joulinar (support)
Image by         : DietPi Core Team (pre-image: from scratch)
Web              : https://dietpi.com | https://twitter.com/DietPi_
Patreon Legends  : Camry2731
Contribute       : https://dietpi.com/contribute.html
DietPi Hosting   : Powered by https://myvirtualserver.com

dietpi-launcher  : All the DietPi programs in one place
dietpi-config    : Feature rich configuration tool for your device
dietpi-software  : Select optimised software for installation
htop             : Resource monitor
cpu              : Shows CPU information and stats

root@TwinPi:~#
```

```
192.168.178.46 - PuTTY

DietPi v8.0.2 : 13:14 - Thu 02/03/22

- Device model : RPi 3 Model B (aarch64)
- CPU temp : 47 °C / 116 °F : Optimal temperature
- LAN IP : 192.168.178.46 (wlan0)
- MOTD : Please help testing the new DietPi Beta v8.1:
        https://github.com/MichaIng/DietPi/issues/5218

DietPi Team      : MichaIng (lead), Daniel Knight (founder), Joulinar (support)
Image by         : DietPi Core Team (pre-image: from scratch)
Web              : https://dietpi.com | https://twitter.com/DietPi_
Patreon Legends  : Camry2731
Contribute       : https://dietpi.com/contribute.html
DietPi Hosting   : Powered by https://myvirtualserver.com

dietpi-launcher  : All the DietPi programs in one place
dietpi-config    : Feature rich configuration tool for your device
dietpi-software  : Select optimised software for installation
htop             : Resource monitor
cpu              : Shows CPU information and stats

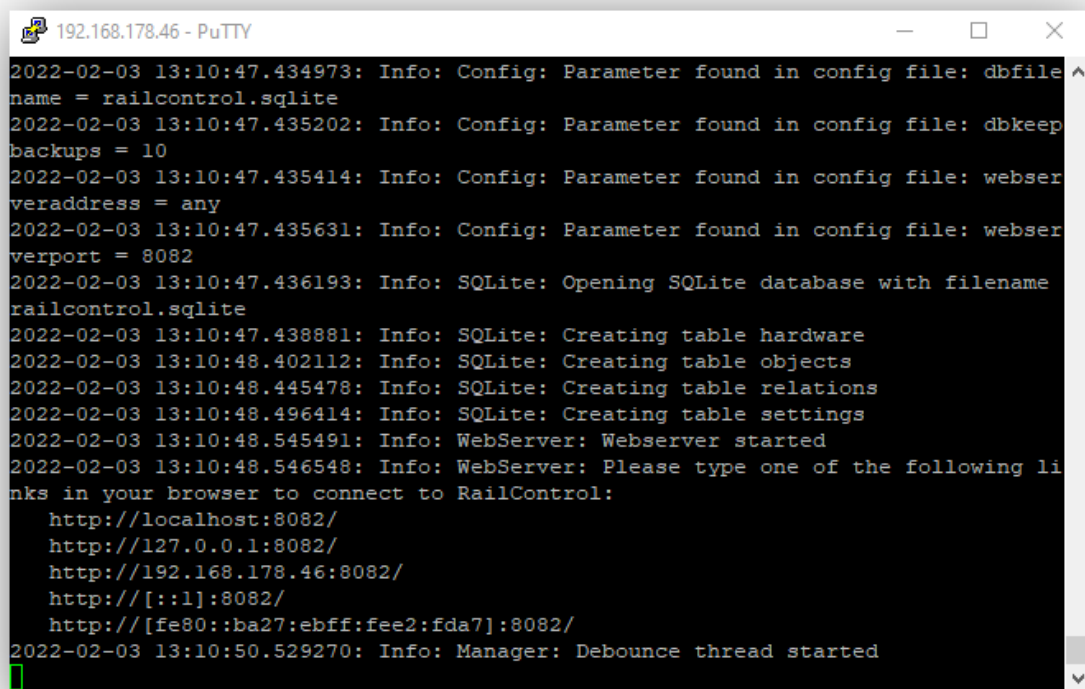
dietpi@TwinPi:~$
```


RailControl vorbereiten, laden und übersetzen.

-
-
-
-

RailControl starten

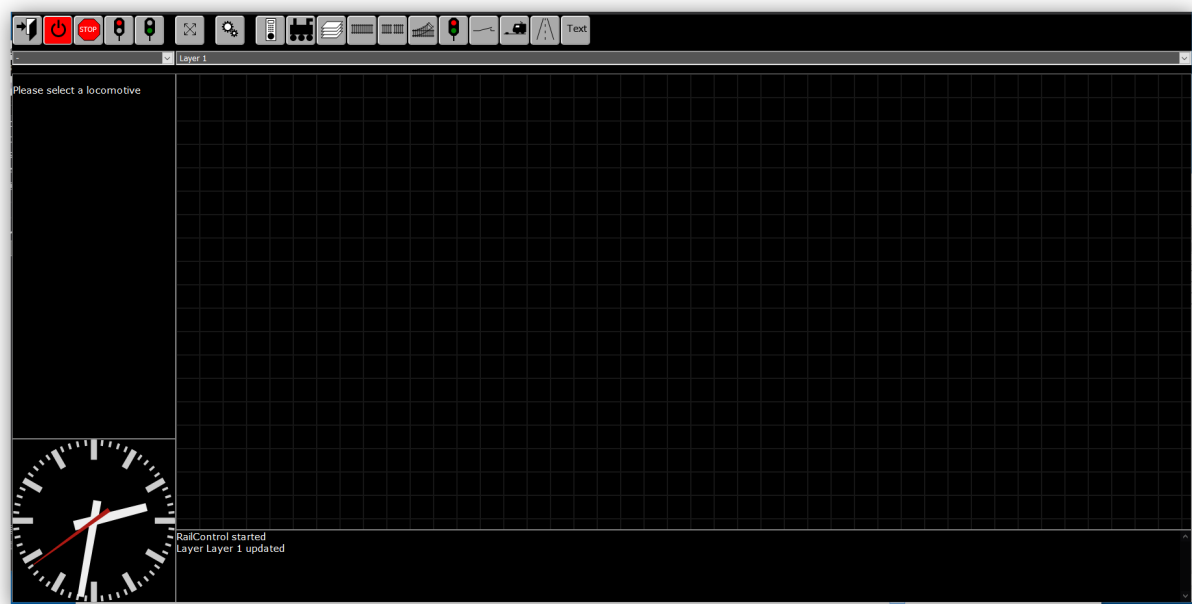
-



```
192.168.178.46 - PuTTY
2022-02-03 13:10:47.434973: Info: Config: Parameter found in config file: dbfile
name = railcontrol.sqlite
2022-02-03 13:10:47.435202: Info: Config: Parameter found in config file: dbkeep
backups = 10
2022-02-03 13:10:47.435414: Info: Config: Parameter found in config file: webser
veraddress = any
2022-02-03 13:10:47.435631: Info: Config: Parameter found in config file: webser
verport = 8082
2022-02-03 13:10:47.436193: Info: SQLite: Opening SQLite database with filename
railcontrol.sqlite
2022-02-03 13:10:47.438881: Info: SQLite: Creating table hardware
2022-02-03 13:10:48.402112: Info: SQLite: Creating table objects
2022-02-03 13:10:48.445478: Info: SQLite: Creating table relations
2022-02-03 13:10:48.496414: Info: SQLite: Creating table settings
2022-02-03 13:10:48.545491: Info: WebServer: Webserver started
2022-02-03 13:10:48.546548: Info: WebServer: Please type one of the following li
nks in your browser to connect to RailControl:
    http://localhost:8082/
    http://127.0.0.1:8082/
    http://192.168.178.46:8082/
    http://[::1]:8082/
    http://[fe80::ba27:ebff:fee2:fda7]:8082/
2022-02-03 13:10:50.529270: Info: Manager: Debounce thread started
```

-
-

erste Ansicht - RailControl



Einstellungen vornehmen

allgemeine Einstellungen



Einstellungen

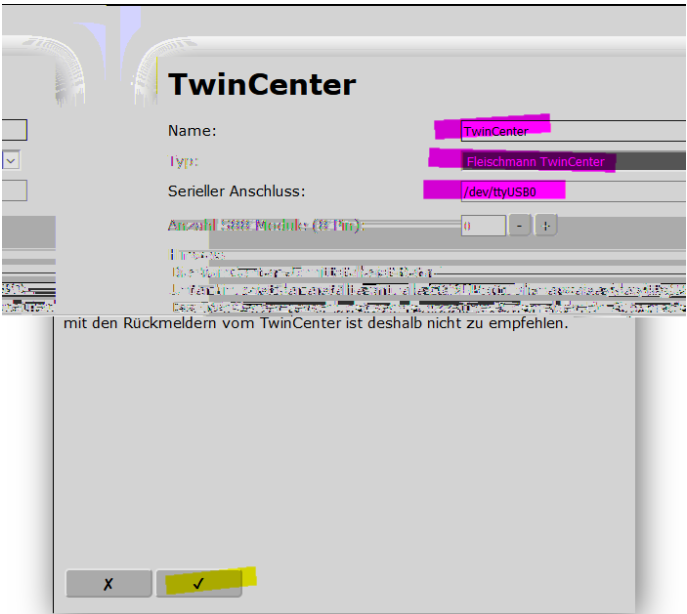
Sprache:	<div>Deutsch</div>
Standard Schaltzeit (ms):	<div>250</div>
Füge unbekannte Rückmelder automatisch hinzu:	<input type="checkbox"/>
Schalte Strom aus bei Rückmelder in freiem Gleis:	<input checked="" type="checkbox"/>
Wähle die Fahrstrasse nach:	<div>Egal</div>
Anzahl der zu reservierenden Gleise:	<div>2</div>
Log Level:	<div>Informationen</div>

X

✓

-
-

Schnittstelle einstellen



-
-

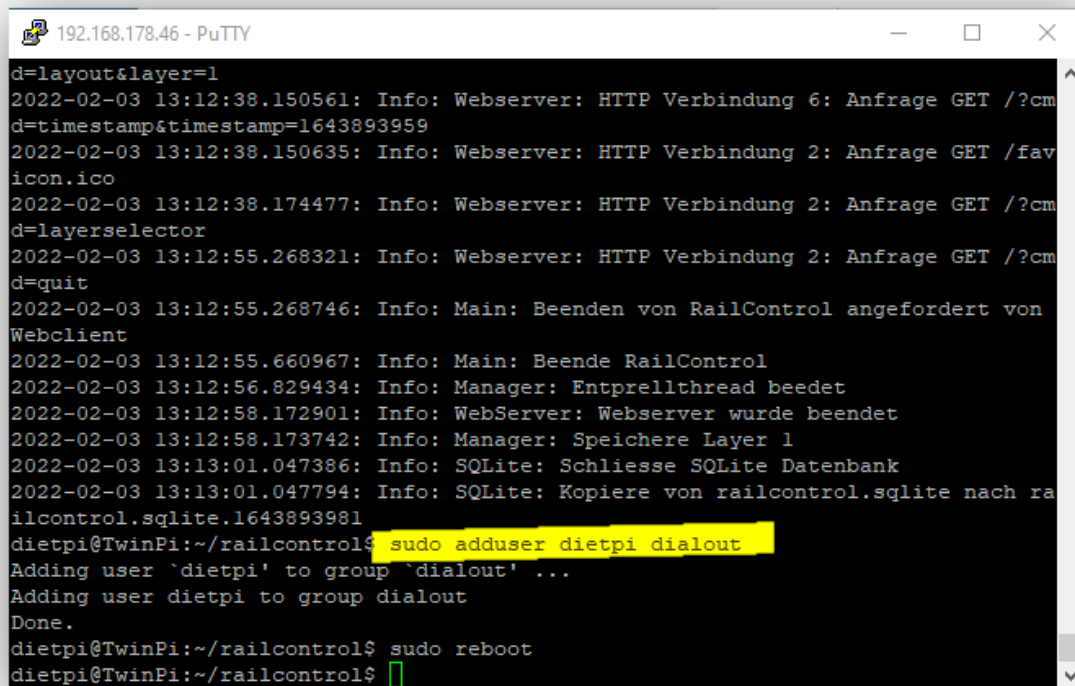


serielle Schnittstelle ohne root benutzen

-

-

-

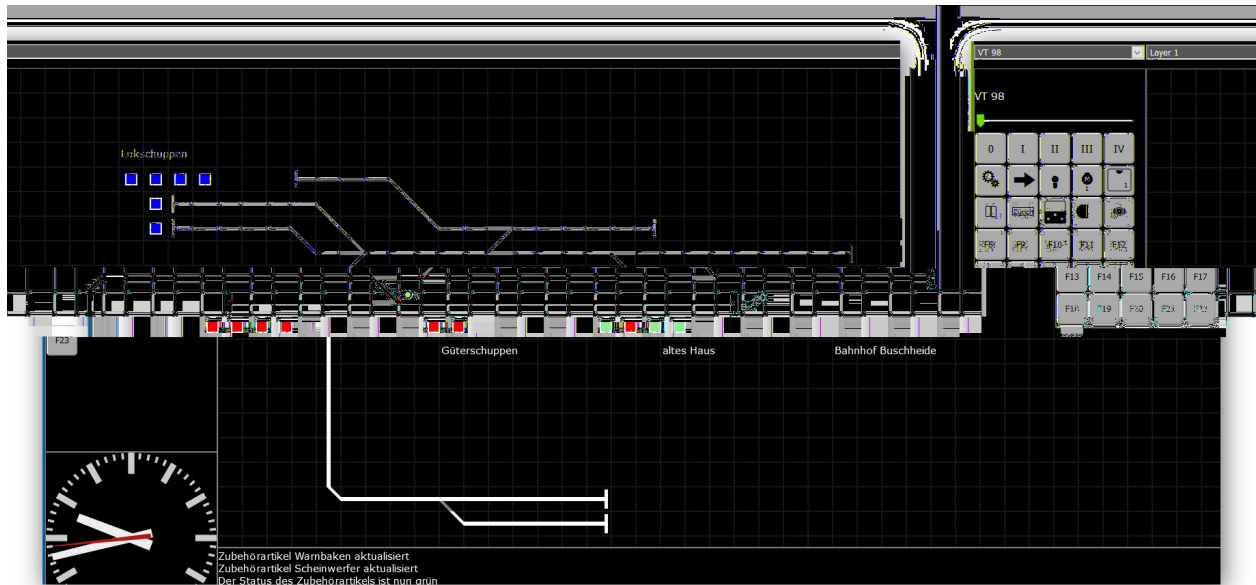


```
192.168.178.46 - PuTTY
d=layout&layer=1
2022-02-03 13:12:38.150561: Info: Webserver: HTTP Verbindung 6: Anfrage GET /?cm
d=timestamp&timestamp=1643893959
2022-02-03 13:12:38.150635: Info: Webserver: HTTP Verbindung 2: Anfrage GET /fav
icon.ico
2022-02-03 13:12:38.174477: Info: Webserver: HTTP Verbindung 2: Anfrage GET /?cm
d=layerselector
2022-02-03 13:12:55.268321: Info: Webserver: HTTP Verbindung 2: Anfrage GET /?cm
d=quit
2022-02-03 13:12:55.268746: Info: Main: Beenden von RailControl angefordert von
Webclient
2022-02-03 13:12:55.660967: Info: Main: Beende RailControl
2022-02-03 13:12:56.829434: Info: Manager: Entprellthread beendet
2022-02-03 13:12:58.172901: Info: WebServer: Webserver wurde beendet
2022-02-03 13:12:58.173742: Info: Manager: Speichere Layer 1
2022-02-03 13:13:01.047386: Info: SQLite: Schliesse SQLite Datenbank
2022-02-03 13:13:01.047794: Info: SQLite: Kopiere von railcontrol.sqlite nach ra
ilcontrol.sqlite.1643893981
dietpi@TwinPi:~/railcontrol$ sudo adduser dietpi dialout
Adding user `dietpi' to group `dialout' ...
Adding user dietpi to group dialout
Done.
dietpi@TwinPi:~/railcontrol$ sudo reboot
dietpi@TwinPi:~/railcontrol$
```

Datensicherung

-

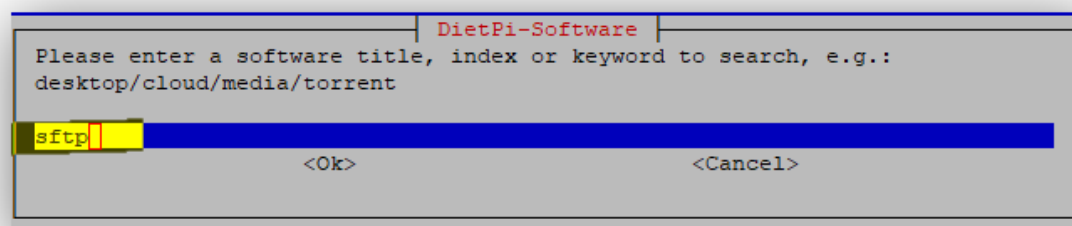
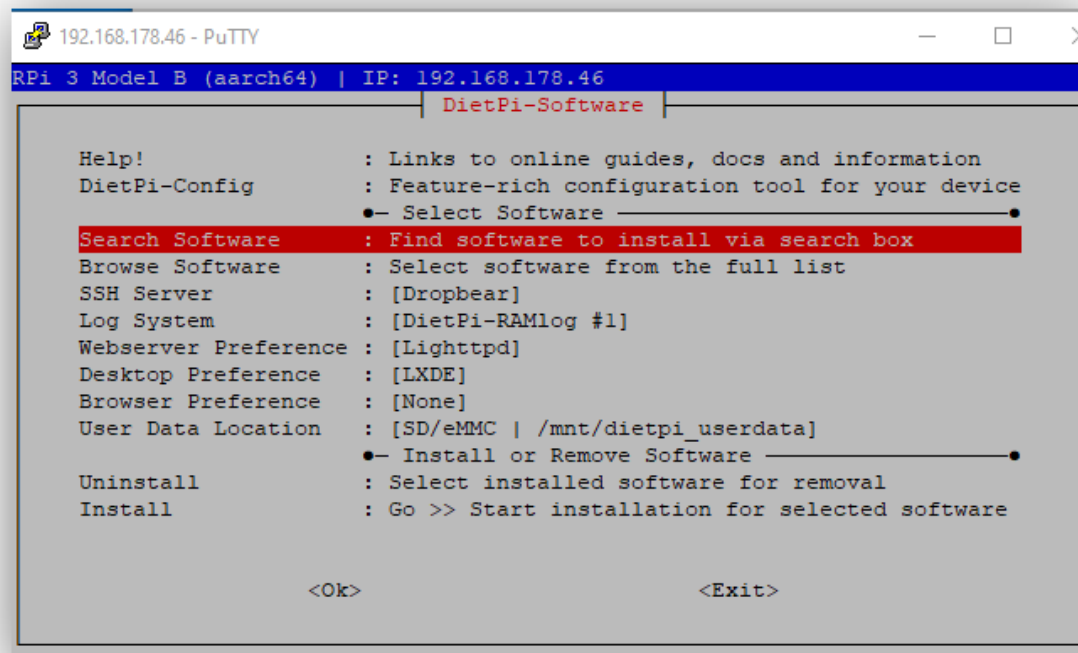
-
-
-

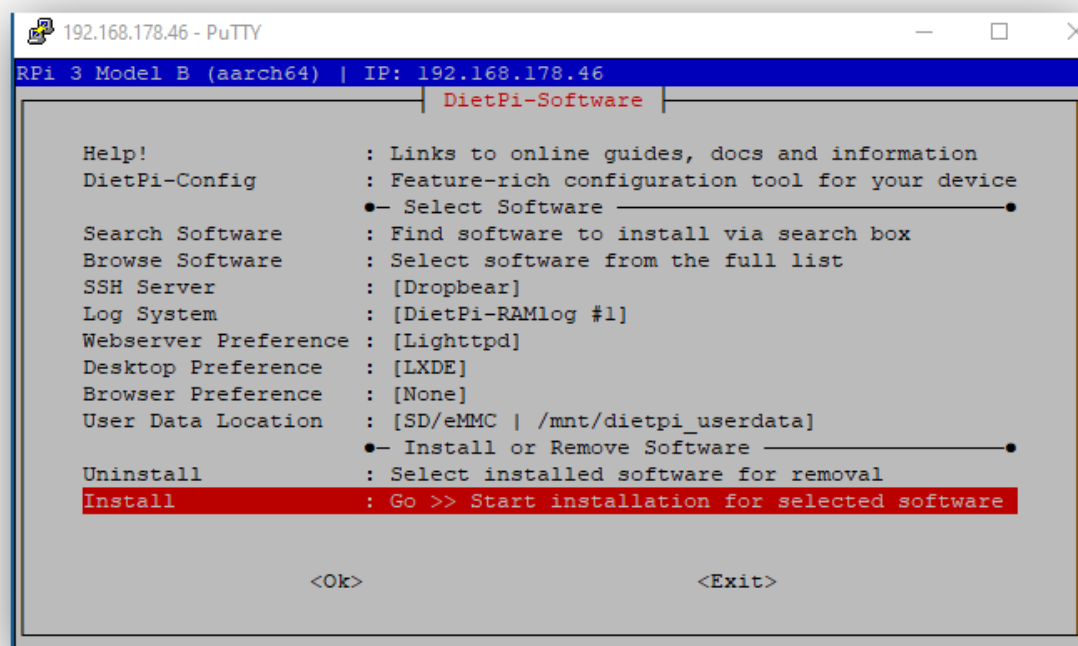
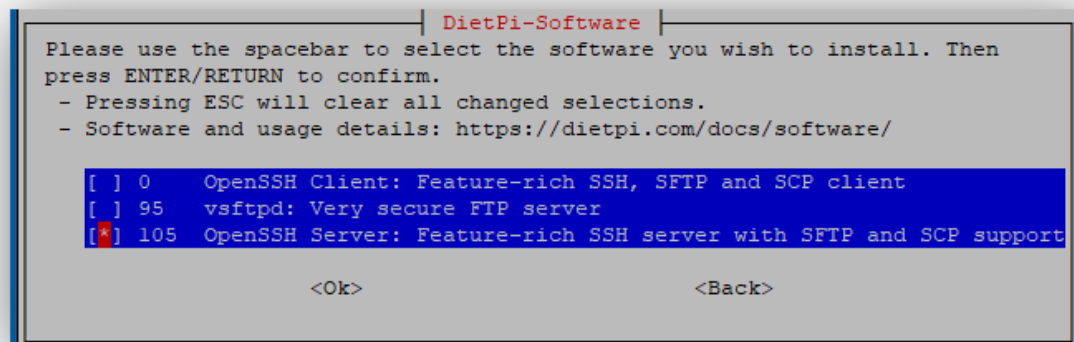


Zusätzliche Software installieren

SFTP (z.B. für „WinSCP“)

-





TwinCenter - RailControl WinSCP

Lokal Markieren Dateien Befehle Sitzung Einstellungen Entfernt Hilfe

Synchronisieren Übertragungsoptionen Standard

RailControl X Neue Sitzung

D:\Daten\Documents\Projekte_RailControl_Daten Sicherung_Daten_TwinCenter\ /home/dietpi/railcontrol/

Name	Größe	Typ	Geändert	Name	Größe	Geändert	Rechte	Besitzer
..		Übergeordnetes V...	11.11.2021 11:04:17	..		29.01.2022 18:33:55	rw-r--r--	dietpi
Cygwin		Dateiordner	30.09.2021 14:21:17	DataModel		29.01.2022 19:04:15	rw-r--r--	dietpi
railcontrol.sqlite	72 KB	SQLITE-Datei	11.11.2021 11:00:50	Hardware		29.01.2022 19:08:08	rw-r--r--	dietpi
				html		29.01.2022 18:33:15	rw-r--r--	dietpi
				Logger		29.01.2022 19:10:56	rw-r--r--	dietpi
				Network		29.01.2022 19:11:27	rw-r--r--	dietpi
				Storage		29.01.2022 19:12:23	rw-r--r--	dietpi
				test		29.01.2022 18:33:15	rw-r--r--	dietpi
				tools		29.01.2022 18:33:15	rw-r--r--	dietpi
				Utils		29.01.2022 19:12:34	rw-r--r--	dietpi
				WebServer		29.01.2022 19:01:15	rw-r--r--	dietpi
				amalgamation.bash	1 KB	29.01.2022 18:33:15	rw-r--r--	dietpi
				ArgumentHandler.cpp	2 KB	29.01.2022 18:33:14	rw-r--r--	dietpi
				ArgumentHandler.h	2 KB	29.01.2022 18:33:14	rw-r--r--	dietpi
				ArgumentHandler.o	686 KB	29.01.2022 18:44:38	rw-r--r--	dietpi
				CMakeLists.txt	8 KB	29.01.2022 18:33:14	rw-r--r--	dietpi
				Config.cpp	3 KB	29.01.2022 18:33:14	rw-r--r--	dietpi
				Config.h	2 KB	29.01.2022 18:33:14	rw-r--r--	dietpi
				Config.o	1.362 KB	29.01.2022 18:44:49	rw-r--r--	dietpi
				ControlInterface.h	11 KB	29.01.2022 18:33:14	rw-r--r--	dietpi
				DataTypes.h	8 KB	29.01.2022 18:33:14	rw-r--r--	dietpi
				Fallthrough.h	1 KB	29.01.2022 18:33:14	rw-r--r--	dietpi
				Languages.cpp	89 KB	29.01.2022 18:33:14	rw-r--r--	dietpi

72,0 KB von 72,0 KB in 1 von 2 0 B von 122 MB in 0 von 44 4 versteckt

